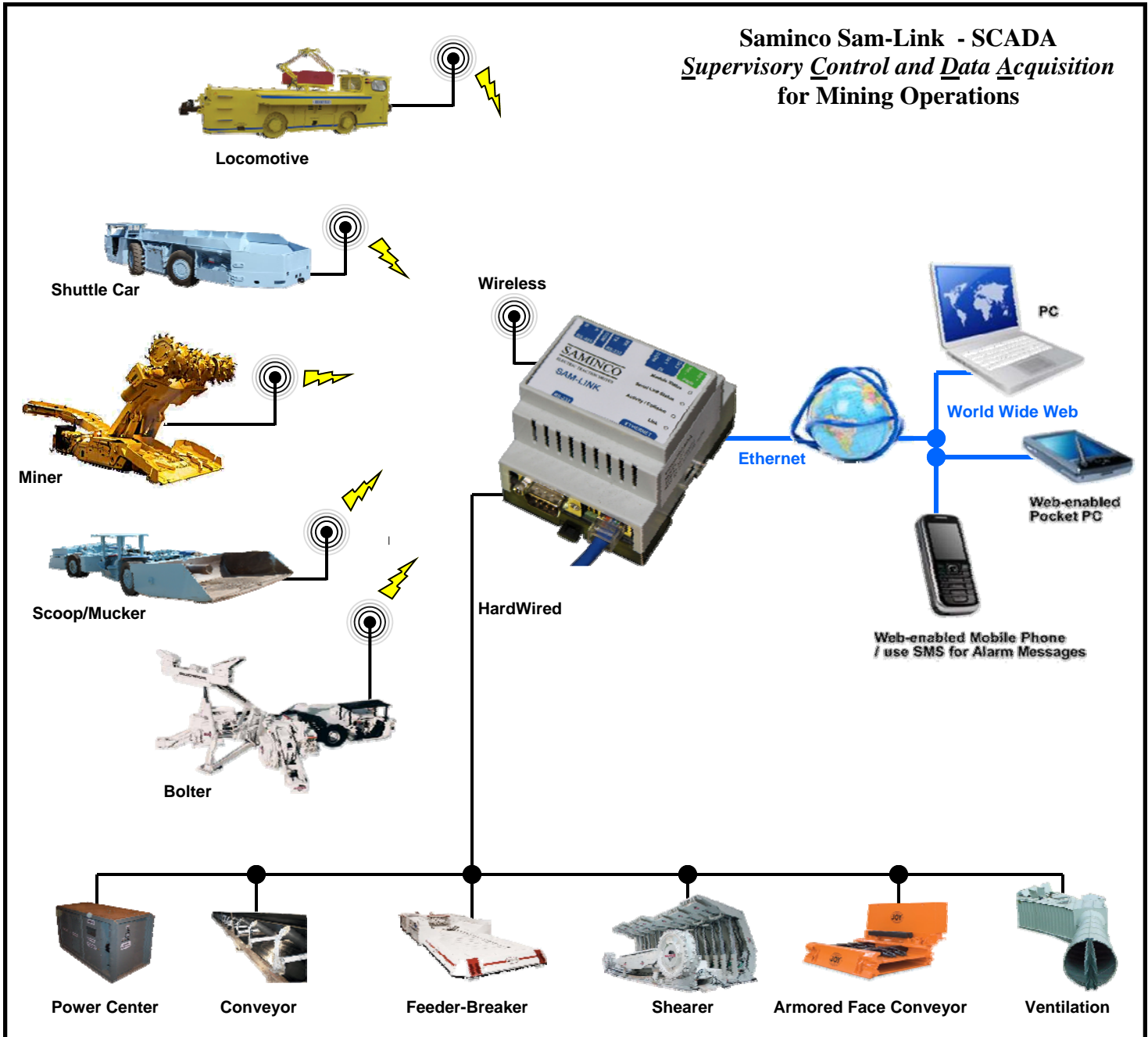


SamLink for Saminco Mining Products gives users web-based access to real-time monitoring of mobile and stationary machines equipped with Sam-Link by using a standard internet web-browser.
Features include: Data-Logging, alarm handling, monitoring and control.
SamLink comes pre-loaded and set up takes a matter of minutes.



Features and Functions

Monitoring

- Customizable with up to 20 pages
- Select from Predefined System Signals
- Create Custom Signals

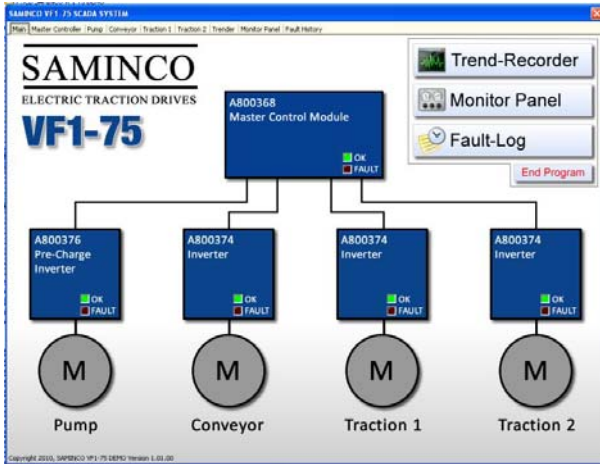
Alarm Monitoring

- Define up to 64 Alarms
- Alarm History with date/time stamp
- Alarm notification via e-mail

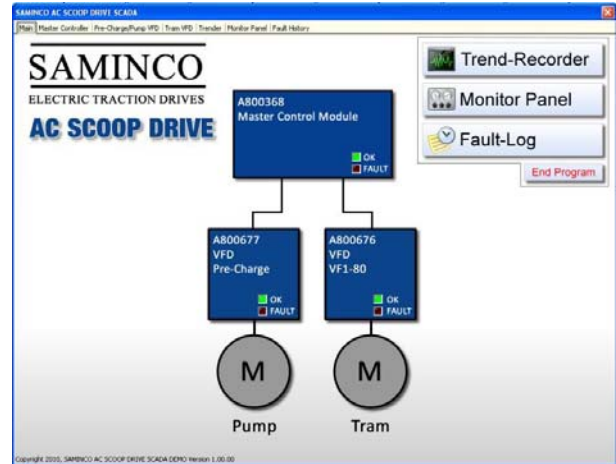
System Functions

- User account management
- Real Time Clock
- Connect to external modem

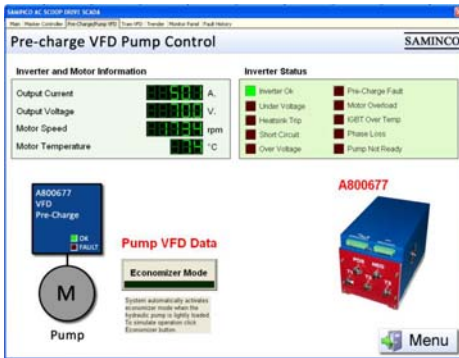
SamWeb - Real Time monitoring via the World Wide Web



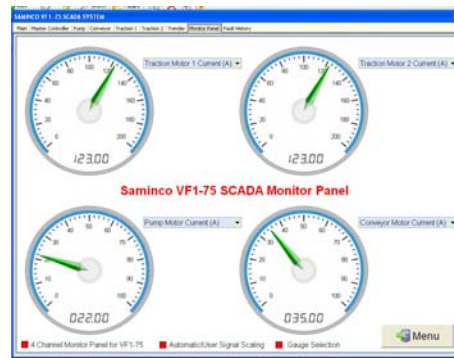
DC to AC ShuttleCar Start-up Screen



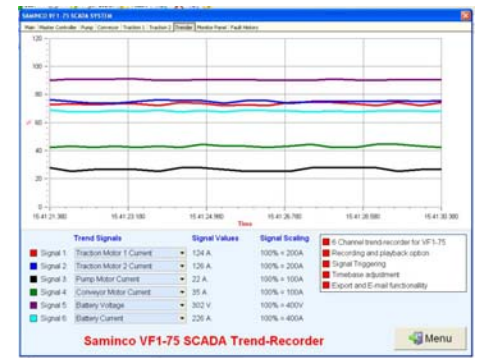
DC to AC Scoop Start-up Screen



Typical Monitor Screen



Programmable Monitor Panel



Programmable Trend Recorder



SamLink Virtual SCADA Module

- Serial Ports: 1x RS232 (full modem)
1x RS232/RS485
- Protocols: Modbus RTU/ASCII JBUS
- Ethernet: 10/100Mbit/sec
- Protocols: Modbus TCP, SMTP, FTP
- I/O: 2x Discreet Inputs
- Indicators: Status, Active, Link, Collision
- Configuration: Via Web Browser
- Housing: Plastic, DIN Rail Mounted



Wireless Transmitter
Housed in Saminco's
Standard XP Display